



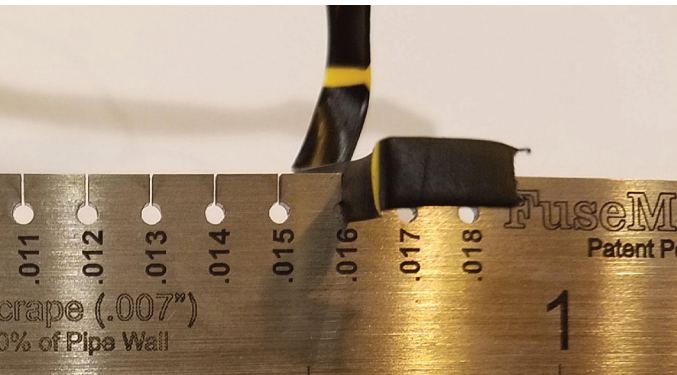
FuseMaster

Electrofusion Measuring Gauge

Why Choose FuseMaster? Electrofusion Measuring Gauge

QUICK . ACCURATE . STRAIGHT FORWARD

- Meets all new requirements of upcoming standards
- Ensures QUALITY and CONSISTANT joints
- Promotes PROPER installation of electrofusion joints



SIZES	PART #
1"-6" Pipe	FM16-19
2"-12" Pipe	FM212-19
12" + Custom Sizes	FMC-19

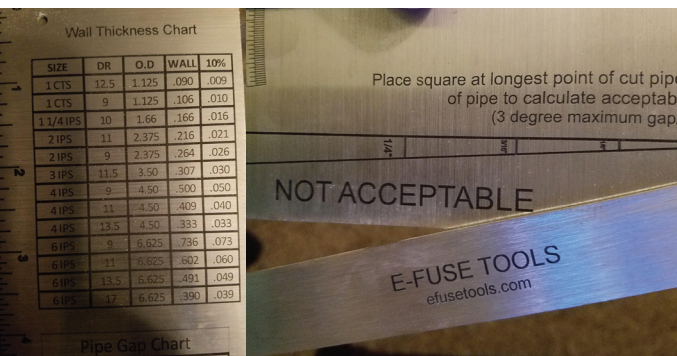
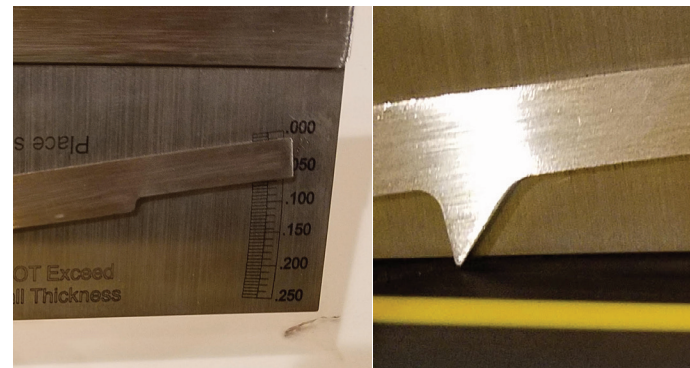
*Fully Customizable per Company Pipe Sizes and Specifications

THICKNESS GAUGE

Measure your peel/ribbon to ensure oxidation is removed and wall loss is not exceeded

GOUGE INDICATOR

Measure a scratch or gouge to confirm acceptability



GAP INDICATOR

Measure your cut to insure you are within spec

PIPE CHART

Chart provides acceptable ranges for wall thickness and 10% wall loss. * CUSTOM SIZES AVAILABLE

Manufactured By: E-Fuse Tools, LLC.
2300 Three Rod Road East Aurora, NY 14052

Distributed By: Pipeline Equipment Resources Company, LLC.
888-232-PERC (7372) • info@perc.us.com

